



## **Hand Delivered**

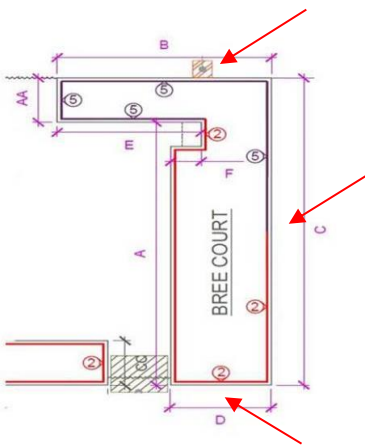
Bree Court  
46 Capitol Way  
London  
NW9 0AU

17<sup>th</sup> September 2020

Dear Resident,

### **RE: Erection of Scaffolding to Bree Court**

We are writing to remind you to be careful when entering and exiting your block during the scaffold erection and whilst it remains in situ. Please can we request that you follow any pedestrian signage as these are displayed for your safety.



We have now completed the scaffold erection to the inner courtyard and will start to erect scaffold to the perimeter of Bree Court, elevations **B, C & D** as shown below from week commencing **Monday, 21<sup>st</sup> September 2020**. We anticipate that these works will take **5 weeks** to complete. As scaffold goes up you will start to see movement around the scaffold. For your privacy we would recommend that you keep blinds and curtains closed first thing in the morning.

Lawtech will be providing you with covers to protect your furniture and any personal items on your balcony. Please ensure that this protection is in place during working hours, whilst we are working on your elevation. Any items left unprotected are do so at your own risk as Lawtech Group Ltd cannot be held liable for any damage that maybe caused.

All residents will be notified in a timely fashion prior to our commencement of works that will impact use of your balcony. This will provide you with the time required to remove any furniture or personal items from your balcony.

We will be working hard to make sure that our work causes you as little inconvenience possible and would like to thank you in advance for your co-operation. If you have any concerns or questions please do not hesitate to contact your Resident Liaison Team at [cwliaison@networkhomes.org.uk](mailto:cwliaison@networkhomes.org.uk) or alternatively you can contact the TNQ Team at [info@tnq-london.com](mailto:info@tnq-london.com).

Yours faithfully,

**Foyso Uddin**  
TNQ Resident Liaison Team