

29 November 2022

Dear Residents

I am writing to notify you of important changes being made to the Fire Strategy at Avery Court. Please take time to read the information provided below.

External works continue around Avery Court and good progress is being made by the external wall contractor. Royal London's Project Manager has now confirmed that all internal fire compartmentation works, including fire door remediation, have been completed in the west wing (highlighted in green below). Furthermore, all "combustible" external wall materials have been removed. Our Fire Engineer has concluded that the risk has now been removed from these areas and as such these areas do not need to be patrolled by Waking Watch Wardens.

### Important Changes

From **Tuesday 6<sup>th</sup> December 2022 at 7am**, the waking watch will be changing their routes to only patrol those areas marked in red below.

The entirety of Avery Court will continue to operate as a **Simultaneous Evacuation Strategy**.

This means if you become aware of a fire within your building or you hear a fire alarm **you must evacuate the building immediately and proceed to the Assembly Point which is Asda Lawn Gardens**. You should not re-enter the building until the Waking Watch Wardens tell you it is safe to do so. You must not congregate around the perimeter of the building.

There is currently a team of Fire Wardens, who patrol your block on a regular basis. Network Homes, along with the Building Freeholder Royal London and our appointed Fire Engineer, carry out regular checks of the Fire Wardens to ensure they are carrying out their patrols and duties as per the interim Fire Strategy for the Block.

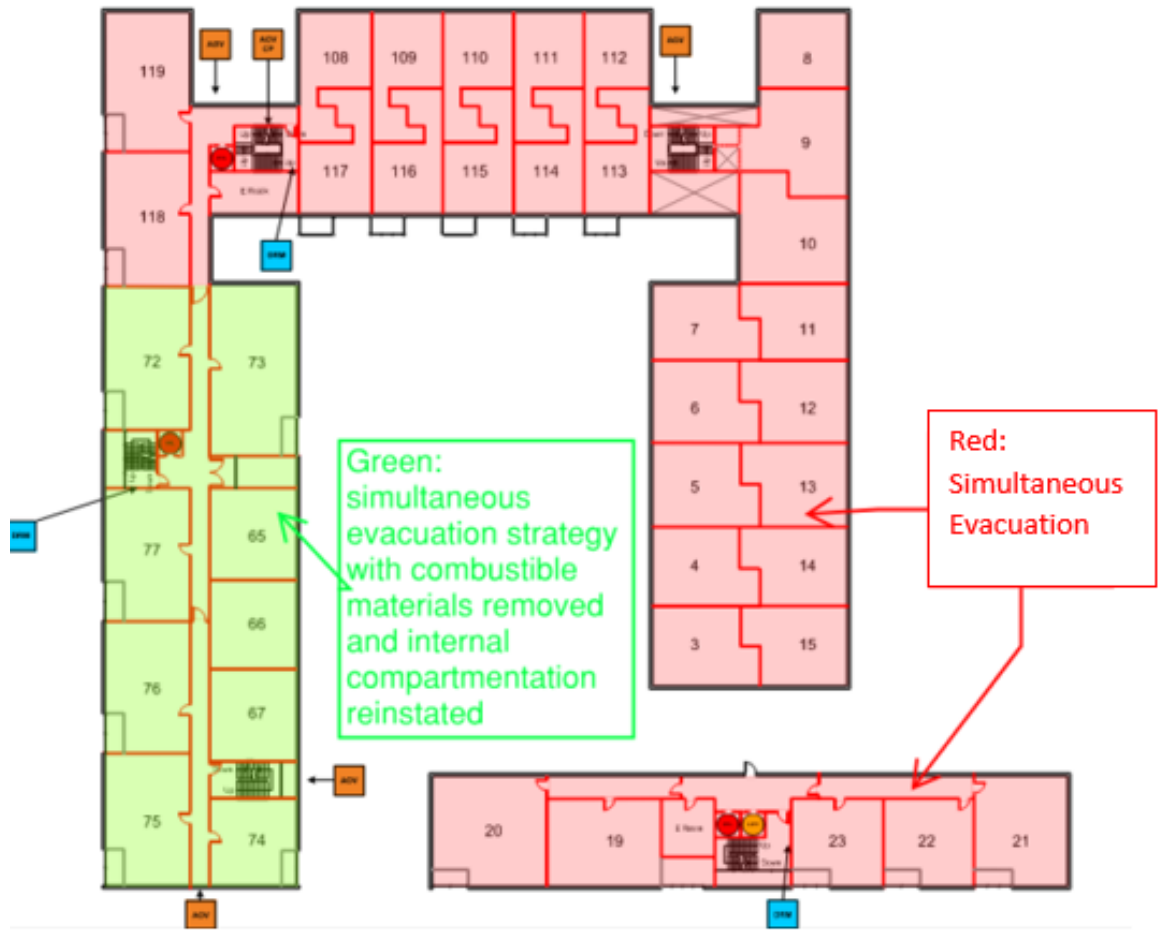
A temporary building wide fire alarm system has been installed in the building and in the event of detecting a fire, either fire wardens or residents will set off the building wide alarms. This will continue to be active in all flats.

The Fire Brigade are aware of the current fire strategy and carry out inspections of the buildings. They have been notified of the progress of works and the new patrols of the waking watch wardens.

Fire Notices within communal areas inform all residents that they must evacuate in the event of a fire. Please make sure you and your household have read the notice.

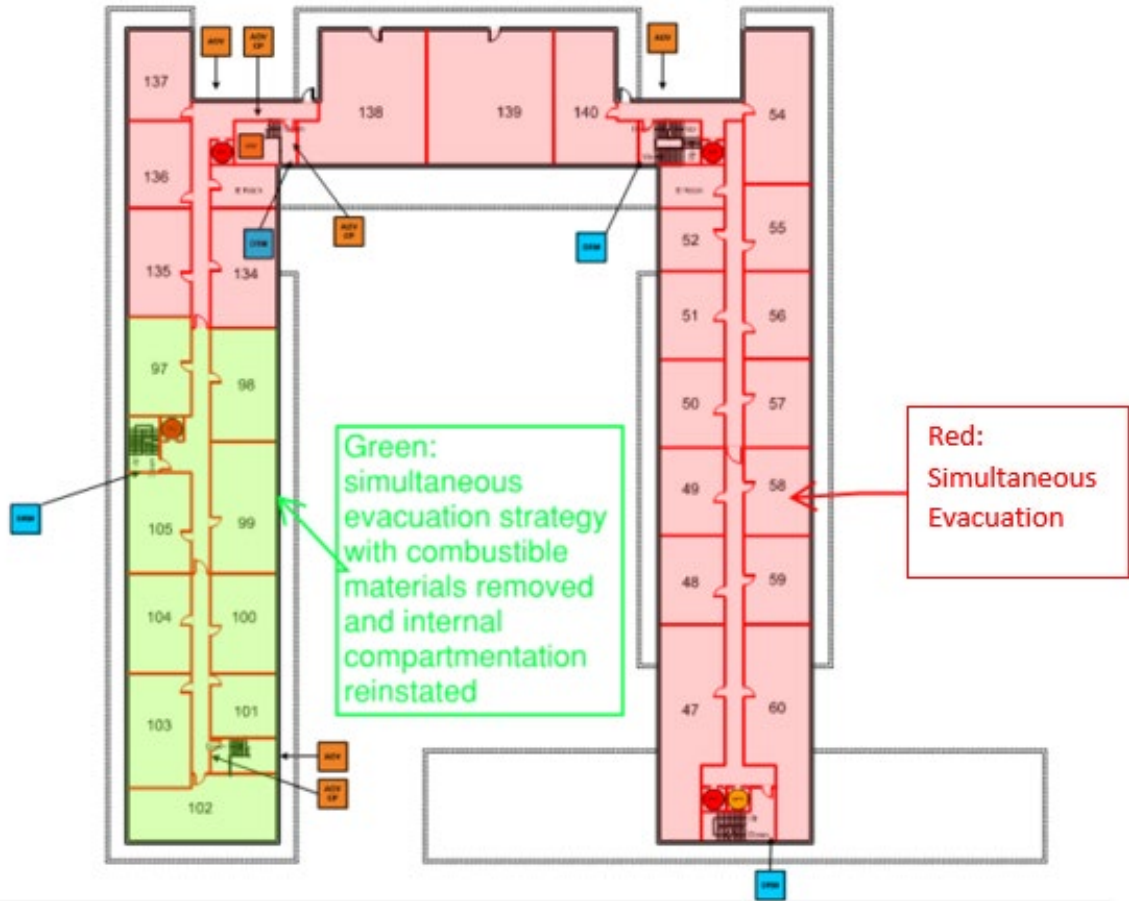


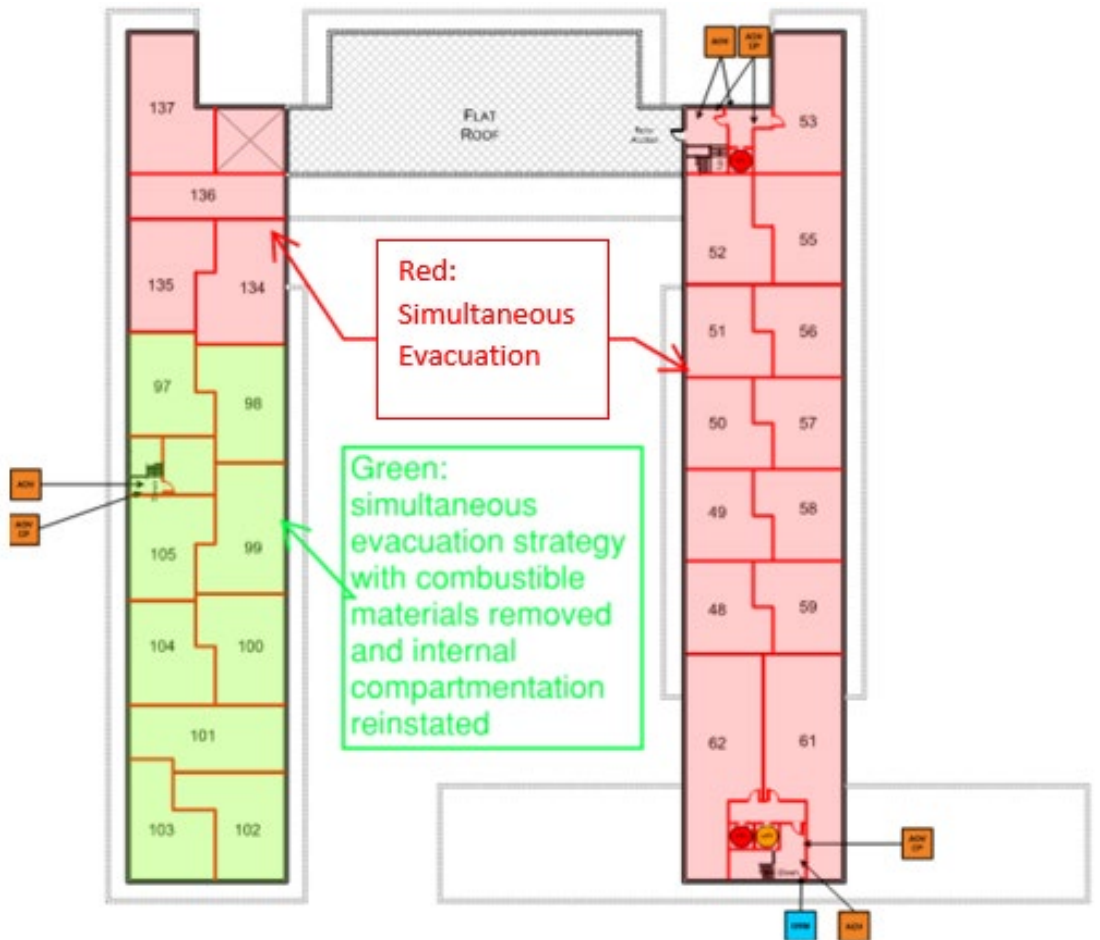












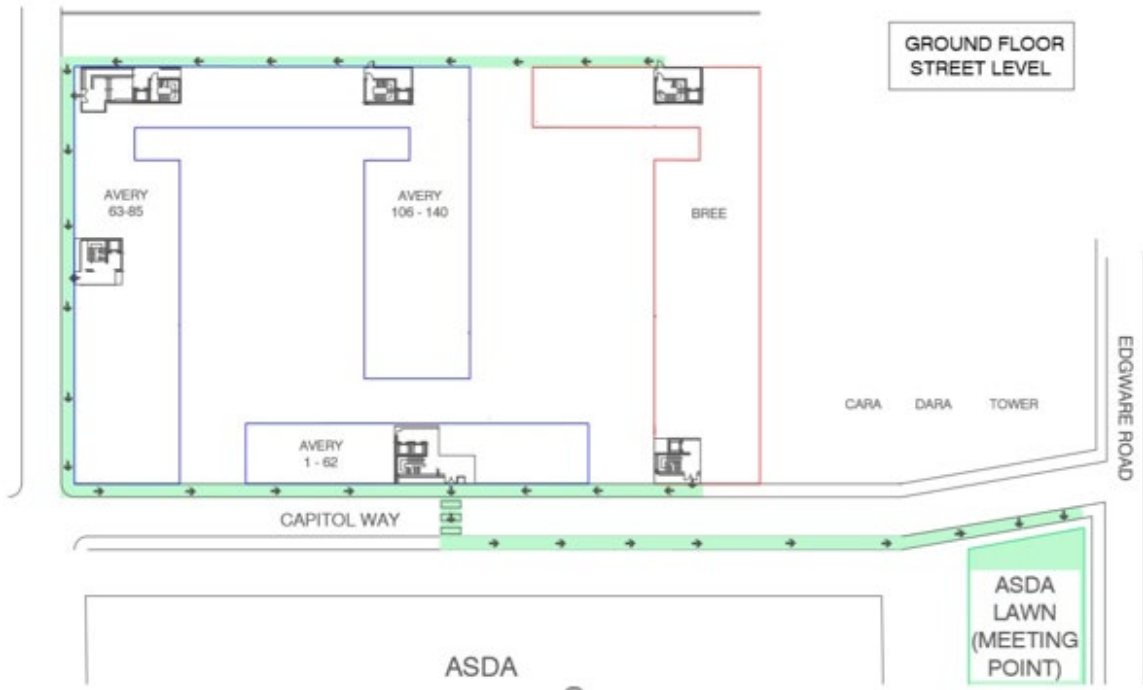
**What should you do if there is a fire in your flat, you hear the fire alarm or the fire warden tells you to evacuate?**

- Evacuate immediately using the nearest staircase as indicated by the fire signage within your block. Do not use the lift.
- Do not pack or bring any possessions with you.
- Close all doors behind you when leaving your flat and the building.
- Follow the instructions of the fire warden if they have told you to leave, or make sure you tell the fire warden about the alarm/fire.
- Call 999.
- Tell the fire wardens or the Fire Brigade if any family members need assistance to evacuate.
- Gather at the assembly point on the pavement next to Asda Lawns (see map below). Wait at the assembly point until you are told by the lead fire warden to return to your home.

A location map is below:



## CAPITOL WAY - AVERY COURT



### **Sounders within your flats**

The sounders that have been installed within your flats are battery operated and you will notice three potential lights on the individual sounders.

A **Green** Light means correct operation

A **Blue** light means it is in test mode.

A **Red** Light means low battery.

Should there be a red light on the sounder, please do not hesitate to contact

If you have any questions, please get in touch with us on [cwliaison@networkhomes.org.uk](mailto:cwliaison@networkhomes.org.uk).

Best wishes

Raj Gandecha  
Head of Resident Management (Building Safety)